



# AR SMART Tower

1000-3000 VA



## AR SMART Tower

- Online Double-Conversion technology (VFI) from 1000VA to 3000VA with a power factor 0.9.
- Easy installation.
- Low running costs with selectable high-efficiency (VFI) and ECO modes.
- User-friendly downloadable monitoring software supporting the main OS providing monitoring functions, diagnostics and automatic controlled shutdown of connected loads.
- High overload capacity.
- Constant voltage constant frequency (CVCF) output mode offering maximum protection to sensitive loads.
- Wide input voltage and frequency ranges reducing battery switching resulting in maximum service life.
- Configurable battery reserve percentage from 3% to 100% of available capacity.
- Cold start.
- Firmware can be upgraded easily to implement new features.
- EPO or On/Off with remote option.
- RS232, USB and mini slot to accept optional communication cards.
- Supplied with input and output power cables

### Key options

- Communication cards to include RS-485 Modbus, SNMP/web and relay interface with programmable dry contacts to integrate with various systems, such as BMS, PLC, SCADA and AS400.
- External manual bypass panels with additional sockets.

## AR SMART Tower 1000-3000 VA

The AR SMART Tower offering premium quality in its simplest format and perfect for POS, small network applications and IT equipment. With its advanced technology, battery life expectancy is maximised whilst delivering exceptional system efficiency and performance.



### Applications

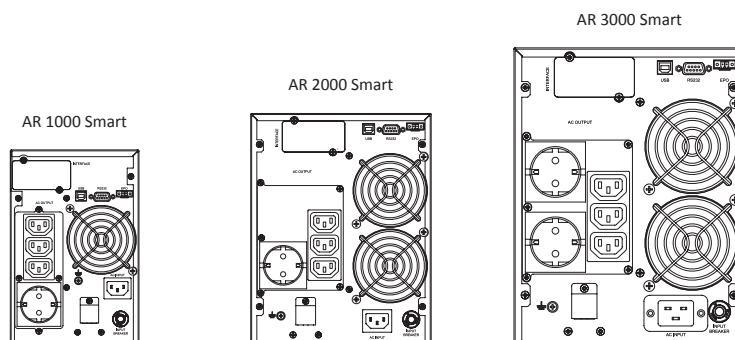
- High-end PCs
- Workstations and servers
- Server rooms and micro data centres
- Electromedical equipment
- Network and telecommunications equipment
- Medium-voltage substations
- PLC control cabinets
- BMS and SCADA systems
- Video surveillance, security and IoT devices

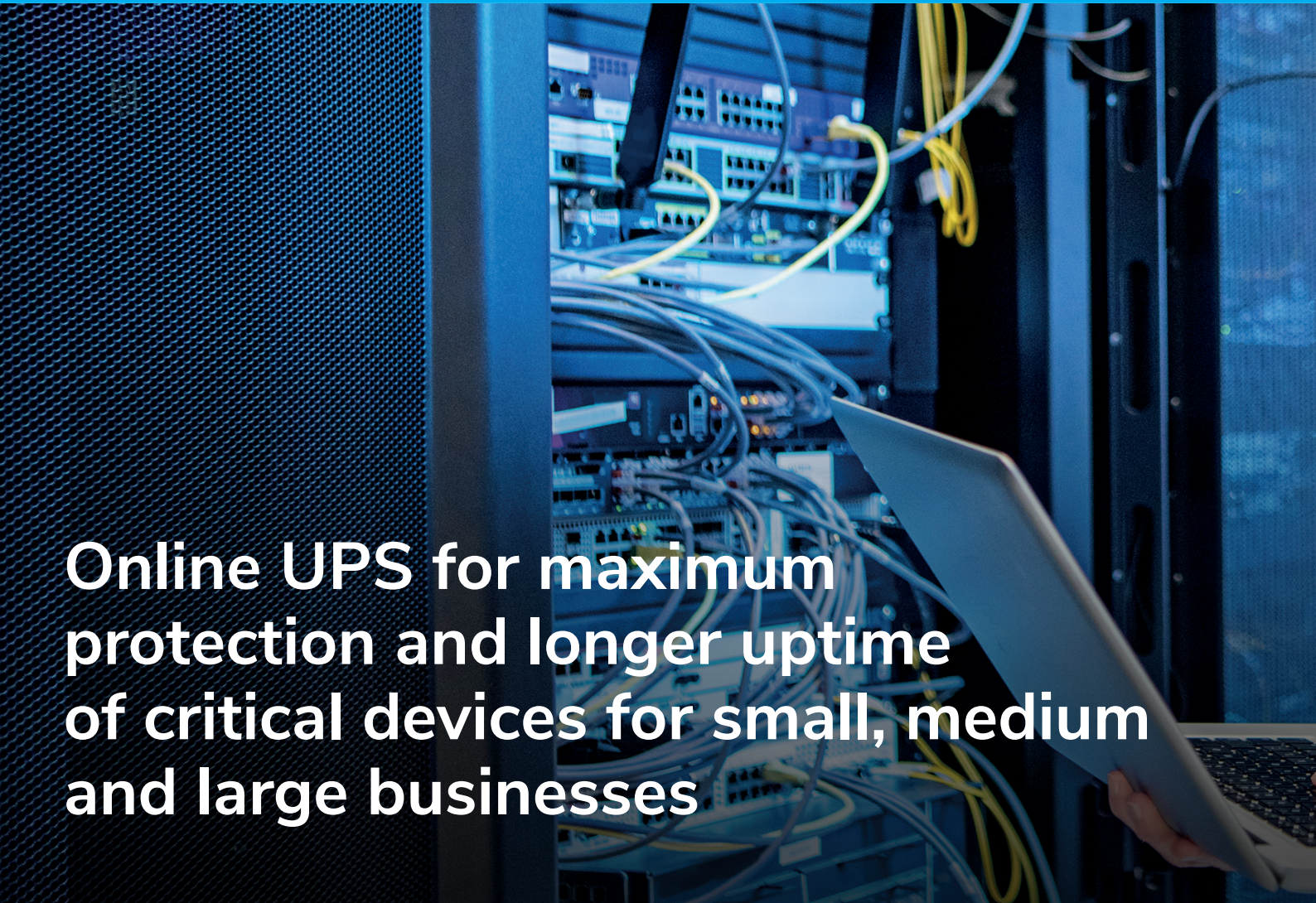
# AR SMART Tower

## AR SMART TOWER TECHNICAL DATA SHEET

MODEL		AR1000 S	AR2000 S	AR3000 S	
POWER	VA	1000	2000	3000	
	W	900	1800	2700	
INPUT	Rated voltage*	110 – 300 Vac			
	Frequency	44 – 66 Hz			
	Power factor	≥0.98			
OUTPUT	Rated voltage	200/208/220/230/240 Vac			
	Voltage distortion	≤3% with linear load I, ≤4% with distorting load			
	Voltage stability	±1%			
	Frequency	50/60 Hz (selectable)			
	Frequency stability	±1 Hz or ±3 Hz (selectable)			
	Power factor	0.9			
	Crest factor	3:1			
	Waveform	Pure sine wave			
	Output sockets	3 x IEC C13 1 Schuko	3 x IEC C13 1 Schuko	3 x IEC C13 2 Schuko	
EFFICIENCY	VFI mode	>89%	>90%	>91%	
	ECO mode	>96%			
GENERAL	Dimensions (WxDxH) mm	147x308x224	192x425.8x249.9		
	Weight (kg)	11.7	23.9	32.9	
	Alarms	Audible and visual alarm alerts for: power failure, low battery, bypass transfer, and UPS fault			
	Protection	Overload, overheating, short circuit, deep discharge, battery overcharging			
	Operating mode	Multi-mode: VFI, ECO, Constant voltage constant frequency (CVCF) output.			
	Cold start from the battery without mains power	Included			
BATTERY	Battery type	12V VRLA, AGM (maintenance-free lead)			
	Number per string	2	4	6	
	Uptime with internal battery in minutes	50% load	9	9	10
		75% load	3	3	3
	Charging time (90%)	6 – 8 hours			
ENVIRONMENTAL PARAMETERS	Operating temperature**	0 – 40°C			
	Relative humidity	0% – 90% (without condensing)			
	Altitude (a.s.l.)	<1000 m with no power derating, >1000 m with 1% derating for every 100 m.			
	Audible noise at 1 m.	≤45 dBA	≤50 dBA		
CONNECTIVITY	Built-in communication ports	USB, RS232, EPO and additional slots for optional cards			
	User interface	LCD and function keys (parameters: voltage, frequency, load percentage, battery voltage, output voltage, UPS temperature).			
	Optional accessories	Cards: SNMP, RS485 ModBus, and dry contact relays			
	Compatible software platforms	Microsoft Windows, Linux, Mac OS, VMware			
REGULATIONS	Standards	IEC EN 62040-1, IEC EN 62040-2, IEC EN 62040-3			
	Marking	CE, UKCA			

\* Depending on the load \*\* To be verified according to the battery parameters





**Online UPS for maximum protection and longer uptime of critical devices for small, medium and large businesses**



**AR PRO Tower**  
1000VA - 3000VA



**AR SMART Tower**  
1000VA - 3000VA



**AR PRO RT**  
1000VA - 3000VA

# SINGLE-PHASE ONLINE UPS



**OD PLUS • OD H**  
1000VA - 3000VA



**MSIII Tower**  
6000VA - 10000VA



**MSIII RT 1/1**  
6000VA - 10000VA



**MSII RT 3/1**  
10000VA - 20000VA



Rev.2025/03 - Our commitment to continuous innovation means that catalogue data may be subject to change without notice

**AblereX Electronics Italy srl**

Viale Milanofiori · Strada 6 · Palazzo N1  
20089 Rozzano (MI)  
info@ablerex.eu · Tel. +39 02 36696420  
www.ablerex.eu

**AblereX Electronics Ltd**

19 The Circle Queen Elizabeth Street,  
London, Greater London SE1 2JE - UK  
info@ablerex.uk · Ph. +44 (0) 7920 058834  
www.ablerex.uk